



This system, which is known as a „Curved Cylindrical Wave Radiator“, comprises six 8” low-mid range drivers and three 1.4” drivers featuring the same technology as the GALEO Line Array. The G 3 dp features integrated digital amplifier electronics with 2400 / 700 Watt AES power and a DSP controller. However, the G3 dp has a fixed vertical directivity of 20 degrees. By simply interchanging the two halves of the horn located on the front, horizontal directivity can be increased from 80 to 120 degrees. Throw, maximum distortion-free sound level and precision of directivity are higher than those offered by comparable horn systems. Using screw-on flying fittings, several G3 dp systems can also be combined into a larger PA system. Due to the high sound level already obtained at 80 Hz, the system can also be complemented by large 18” or 21” subwoofers. The G3 is a 2-way active operated system. The tilt and pivot frame included as standard facilitates simple alignment of the system. Both ground stacked and flown applications are possible.

PRODUCT SPECIFICATIONS

| | |
|--|--|
| Speaker Components | 6 x 8” Nd / 3 x 1,4” Nd |
| Description | Curved Cylindric Wave Radiator |
| Amp Power | LF: 2400 W AES / 110-230 V HF: 700 W AES / 110-230 V |
| Rated Current | 2,9 A @ 230 V |
| SPL <small>Peak @ 1 m</small> | 140 dB |
| Max. Input Signal | 25 dBu |
| DSP | HDLM FPGA Processing 32 bit floating point |
| AD / DA | 24 bit / 96 kHz |
| Latency | 0,8 ms (analog in to analog out) |
| Usable Range | 80 Hz - 18 kHz (-6 dB) |
| Tuning Frequency <small>excursion minimum</small> | 90 Hz |
| X-Overpoint <small>acoustical</small> | Depends on preset |
| Coverage <small>horizontal / vertical</small> | 120° x 20° (120°-version) 80° x 20° (80°-version) |
| Mechanical Splay Angle | 12° |
| Connectors | Neutrik XLR in/out Neutrik PowerCon in/out |
| Handles | 2 x |
| Rigging / Fittings | 8 x M10 Inclusive flying bracket |
| Weight | 43 kg |
| Size <small>height x width x depth</small> | 67,1 x 51,2 x 48,2 cm |
| Order No. | 00550/dp/120 (120°- version) 00550/dp/80 (80°- version) |



Ground stacking with Flying Bracket.

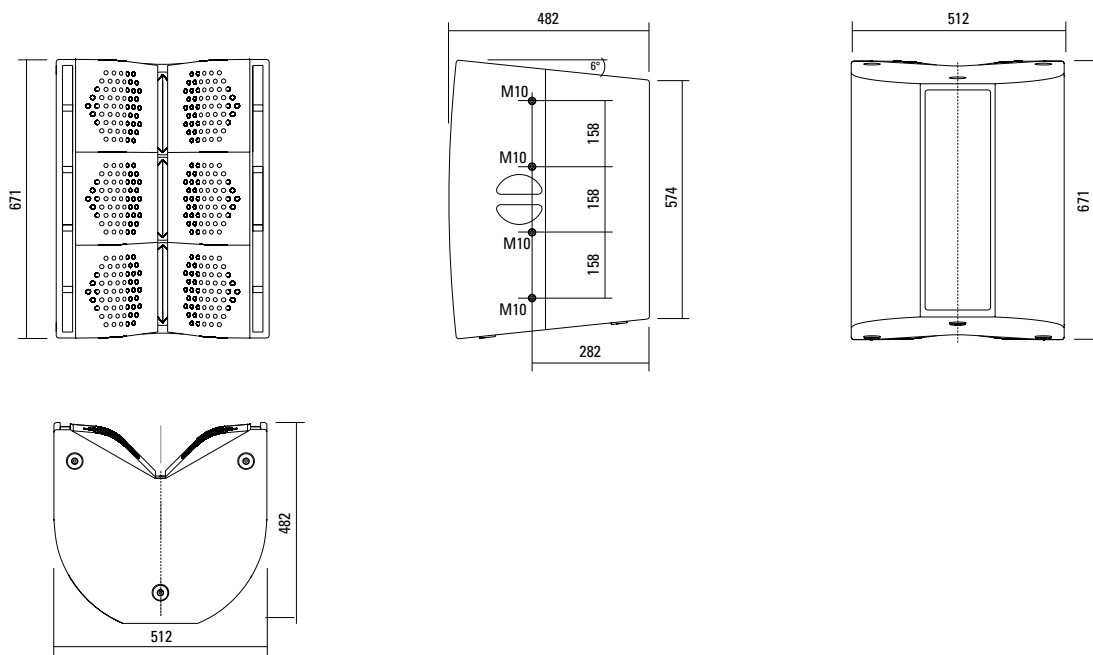


Flown Application.



Screw-on connection fittings for connection with more G3 systems.

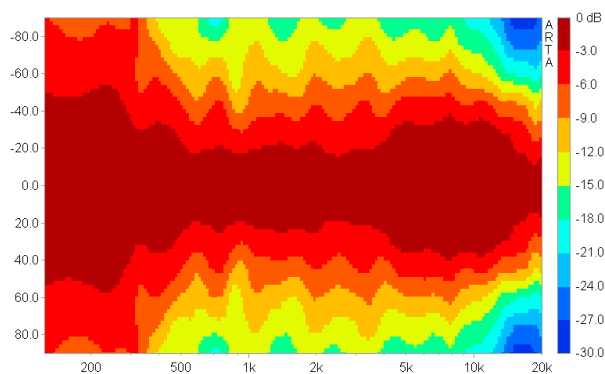
DIMENSIONS



COVERAGE PATTERNS

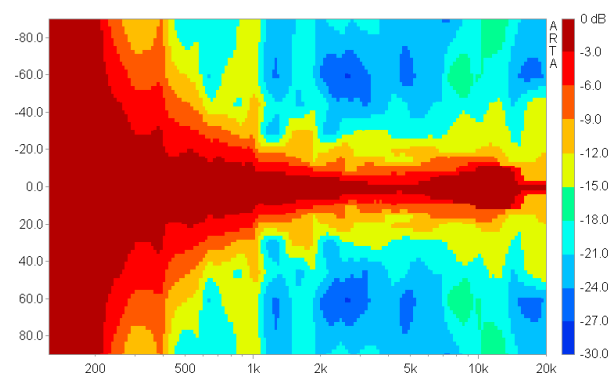
G3 dp horizontal - 2D Directivity Plot (80° AMR® reflectors)

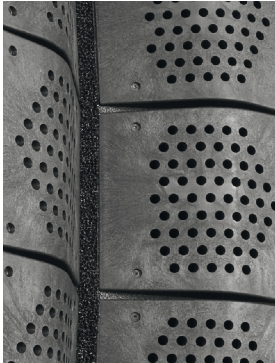
The smooth 80° horizontal dispersion from 500 Hz on.



G3 dp vertikal - 2D Directivity Plot

Very precise 20° vertical dispersion.

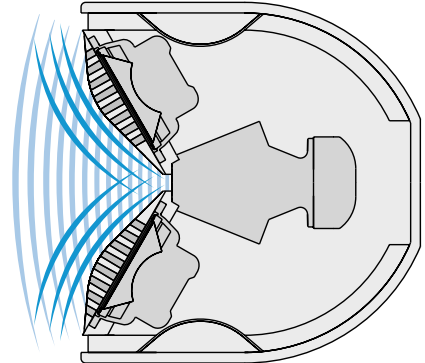




AMR® Principle.

The AMR horn panels contain integrated channels which allow the sound waves generated by the low-mid speakers mounted behind the horn to pass through. For sound waves in the frequency range generated by the 1.4" HF driver, these channels behave as if they were sealed, due to the air mass inside the channels acting as a reflector (AMR = Air Mass Reflection).

The low-mid speakers are coupled to an acoustical band pass filter with a center frequency close to the crossover frequency between the Mid and HF drivers. This construction provides smooth horizontal dispersion over a wide frequency range. Another asset is the extreme compactness of this design.



AMR® Reflectors.

By exchanging the AMR Reflectors, the horizontal dispersion can be changed from 80° to 120° and back according to demand.



120° AMR Horn Panel.



80° AMR Horn Panel.

The more tightly bundled 80°- version of the G 3 system was developed especially for narrower audience areas. Thanks to the patented „Air Mass Reflection“ principle, it is characterised by extremely precise and even directivity.

APPLICATIONS



3 x G 3

Up to three G 3 systems can be flown together.

Flown Application.



Connection Fittings

Two or three G 3 systems can be combined by the use of screw-on Connection Fittings.



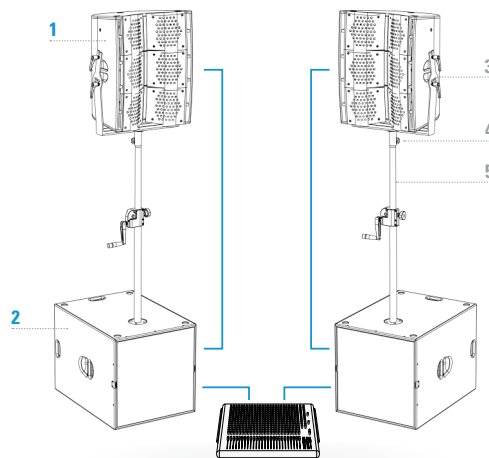
2 x G 3

The system can be aligned easily by the use of the tilt swivel bracket.



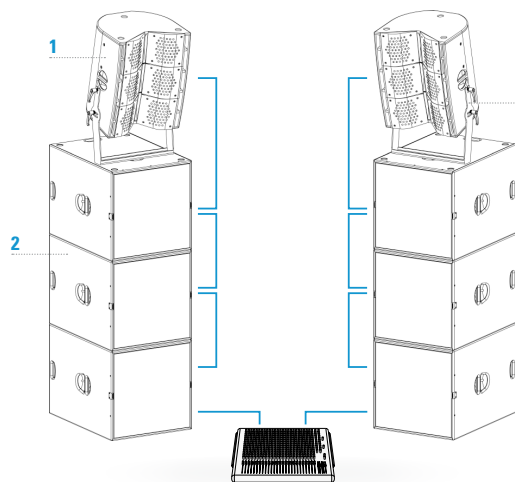
The G 3 systems

A single G3 system corresponds to 3 units of the Galeo line array system, therefore the dispersion is much more precise than that of any horn loaded system. This increases the throw of the system and greatly reduces the spill beyond the nominal coverage. The system can be used flown or ground stacked and is easily extendable. Whilst the basic system can be used in clubs or for small open air events, the XL system is suitable for shows with an audience of up to 5.000 persons.



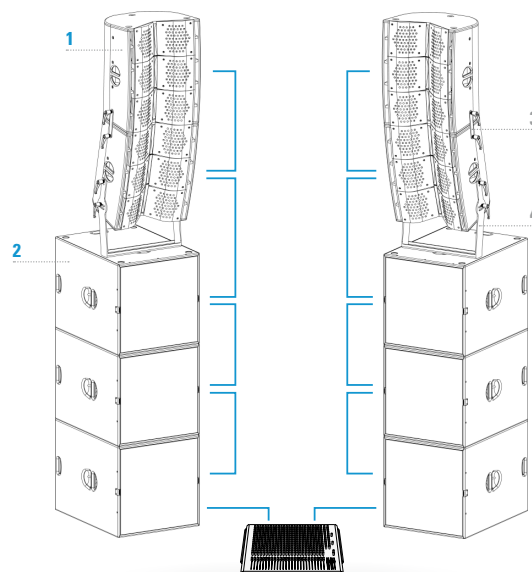
Basic System

| Components | Order No. |
|---|-----------|
| 1 2 x G 3 dp | 00550/dp |
| 2 2 x G Sub 1801 dp 18" Nd, 2500 W AES | 00630/dp |
| Accessories | Order No. |
| 3 Flying Bracket | 01350/set |
| 4 Pole Mount Adapter | 08127/nut |
| 5 Speaker Pole | 03023 |



Standard System

| Components | Order No. |
|---|-----------|
| 1 2 x G 3 dp | 00550/dp |
| 2 6 x G Sub 1801 dp 18" Nd, 2500 W AES | 00630/dp |
| Accessories | Order No. |
| 3 Flying Bracket | 01350/set |



XL System

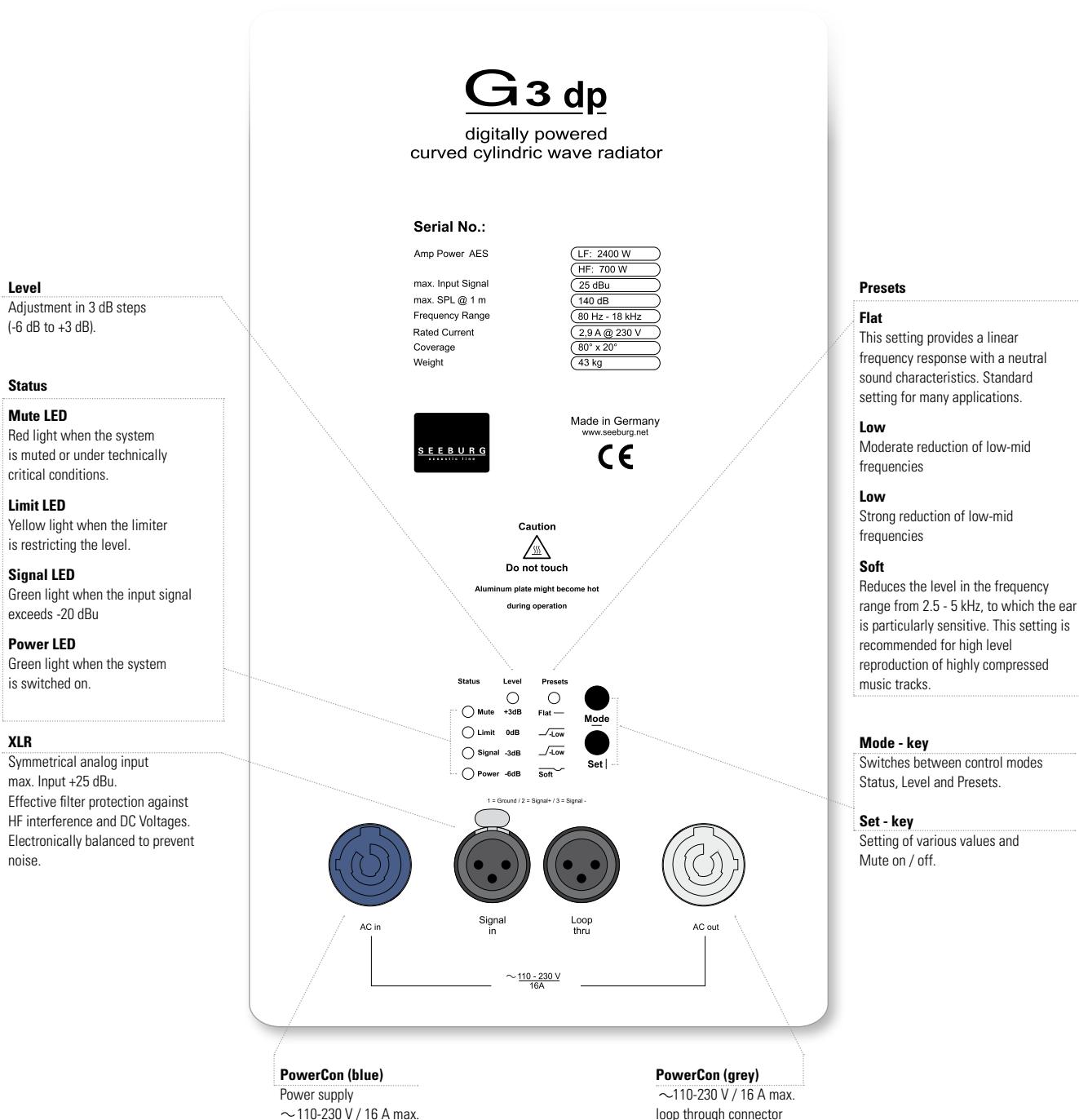
| Components | Order No. |
|---|---------------|
| 1 4 x G 3 dp | 00550/dp |
| 2 6 x G Sub 1801 dp 18" Nd, 2500 W AES | 00630/dp |
| Accessories | Order No. |
| 3 Connection Bar | 08147/G3->G3i |
| 4 Flying Bracket | 01350/set |

The G 3 dp features integrated digital amplifier electronics with a DSP controller. Various factory-configured presets and volume settings can be selected.

High-grade electronic components from the industrial sector and a first-class circuit design ensure excellent audio quality

with low distortion and a minimal noise floor.

Highly efficient and "intelligent" limiter systems ensure optimum protection against overload, without restricting the possibilities offered by this high-performance sound system.



Flying Bracket



for G 3,
incl. 4 x M10 x 20 handle screws,
1 x M20 x 30 mm socket head screw,
1 x flat
Order No. **01350/set**

Tilt Enhancer



for G 3 flying bracket
Order No. **01350/tilt enhancer**

Handle Screw



for flying brackets, adjustable
M10 x 20
Order No. **08375/20**

Stabilisation



for G3 flying bracket,
incl. 2 x screws
Order No. **01350/stab/set**

Connection Bar



short - for 2 units, incl. screws
Order No. **08146/set**
long - up to 3 units, incl. screws
Order No. **08147/set**

Connection Bar



G3 / G3 Connector,
only for groundstack,
for 2 units, incl. screws
Order No. **08147/G3->G3i**

Pole Mount Adapter - M20



for flying bracket,
M20 x 35 mm with nut,
incl. 1 x M20 x 30 socket head screw,
1 x flat
Order No. **08127/nut**

TV Adapter



M20 external thread,
28 mm Ø
Order No. **08128/M20**

Quick Trigger Clamp



max. load 100 kg
Order No. **01223/100 kg**

Quick Trigger TV Clamp



max. load 200 kg
Order No. **01223/TV**



TV Adapter -> Flying Bracket



Tilt Enhancer -> Flying Bracket

ACCESSORIES G 3 dp

Chain Fastener

VBS 7 mm

Order No. **01378**



Ring Screw

M10– DIN 580

Order No. **73700**

M20– DIN 580

Order No. **73900**



AMR Reflectors 120°

for G 3 / Galeo,
consisting of 2 pcs.
AMR reflectors 120°,
incl. fittings

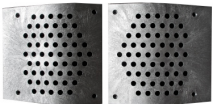
Order No. **08141/120**



AMR Reflectors 80°

for G 3 / Galeo,
consisting of 2 pcs.
AMR reflectors 80°,
incl. fittings

Order No. **08141/80**



Speaker Stand

K&M, incl. wind up,
height 138,5 to 218 cm,
max. load 50 kg,

Order No. **03011**



Cover

for G 3

Order No. **01236**



Rain Cover

for G 3

Order No. **01236/outdoor**



Flight Case

for 2 pcs. G 3 units and accessories,
heavy duty, 9 mm birch multiplex, PVC
coated, loading measurements, 10 x
recessed sprung handles, 4 x butterfly
catches, 2 x scanner windows, 4 x 100
mm blue wheels, 2 pcs. with brake,
partition walls, interior lined with felt

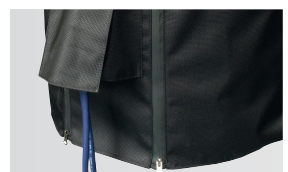
Order No. **16007**



19" Double Door Rack

19" x 6 units, prepared for 2 x LAB
Amps, HDLM 8, Connection Panel,
incl. internal cabling and installation

Order No. **10510**



Rain Cover.